

Building the Highway Network for Fiji: Telecom Fiji's Road Map and Operational Challenges.

PacNOG 35

23rd June 2025

Suva, Fiji.



Agenda



Telecom Footprint

Understanding the current telecom infrastructure and its reach.

1



Operational Challenges

Identifying the difficulties in day-to-day operations.

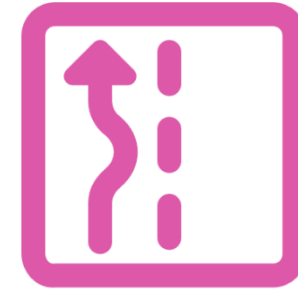
2



Our Target

Defining the specific goals and objectives to be achieved.

3

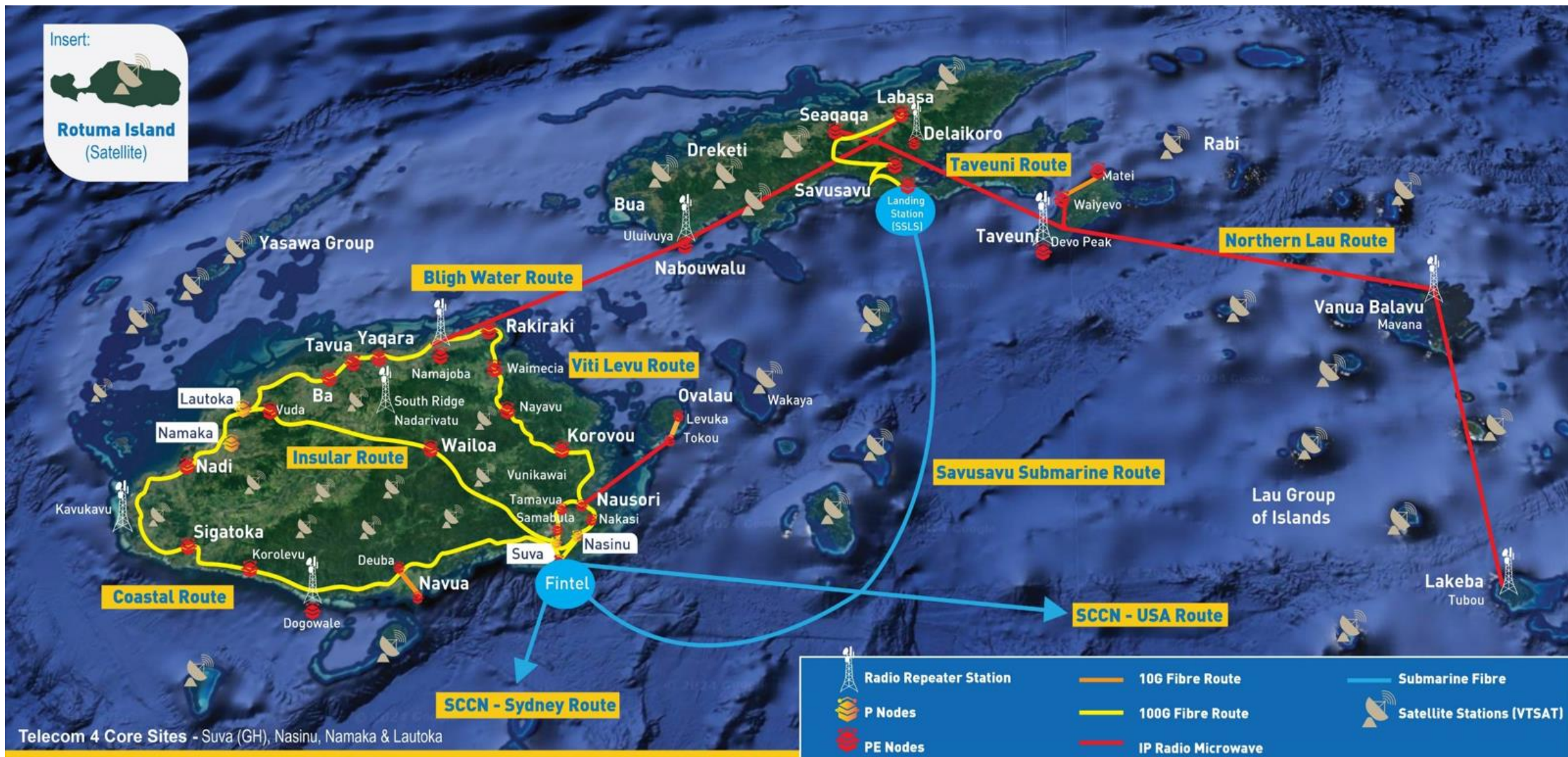


Roadmap & Strategy

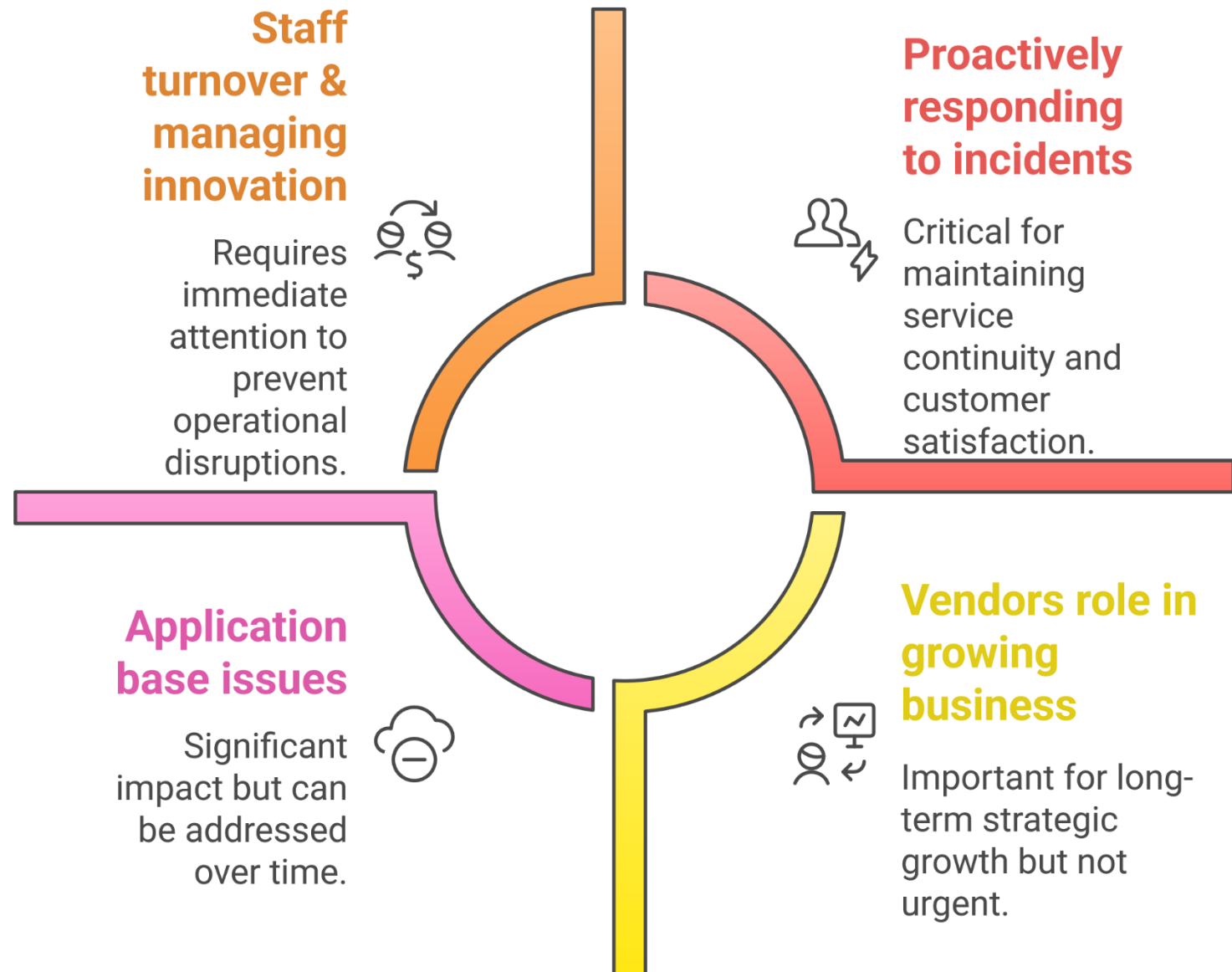
Outlining the plan and approach to reach the target.

4

Telecom Fiji Network Footprint



Operational Challenges



The Target: Our Network

Network Access

Current Footprint

Build Resilient Network

Establish 100G (400G) network infrastructure

Connect Towns/Cities

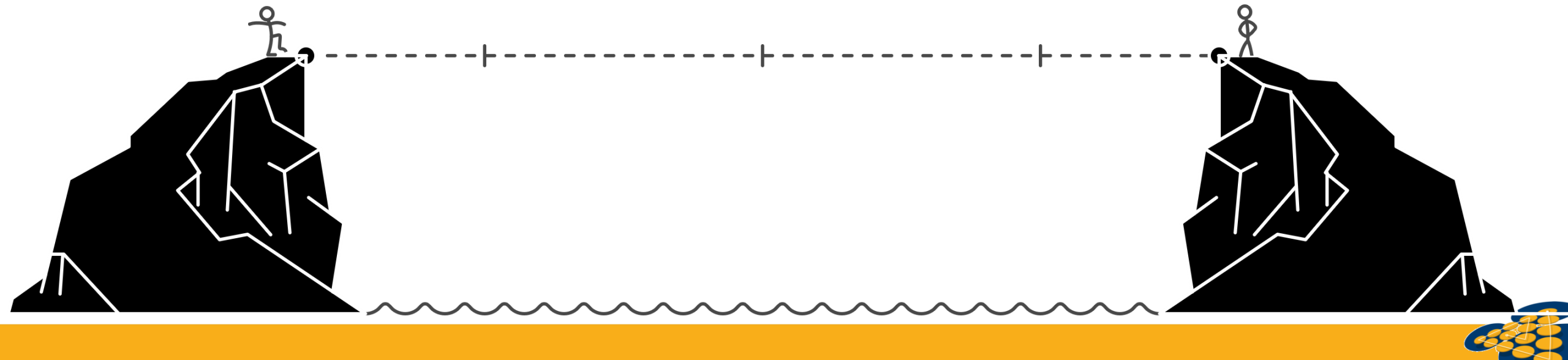
Expand 100G network across Fiji

Reduce Latency

Peering with CDNs, use caching

High-Speed Network & Low Latency

Reliable, fast, cost-effective connectivity



The Target: Next Generation NOC

1

Service Centric Transition

Shifting focus to service delivery

2

End to End Service Excellence

Ensuring seamless service experience

3

Data Insights Utilization

Leveraging data for informed decisions

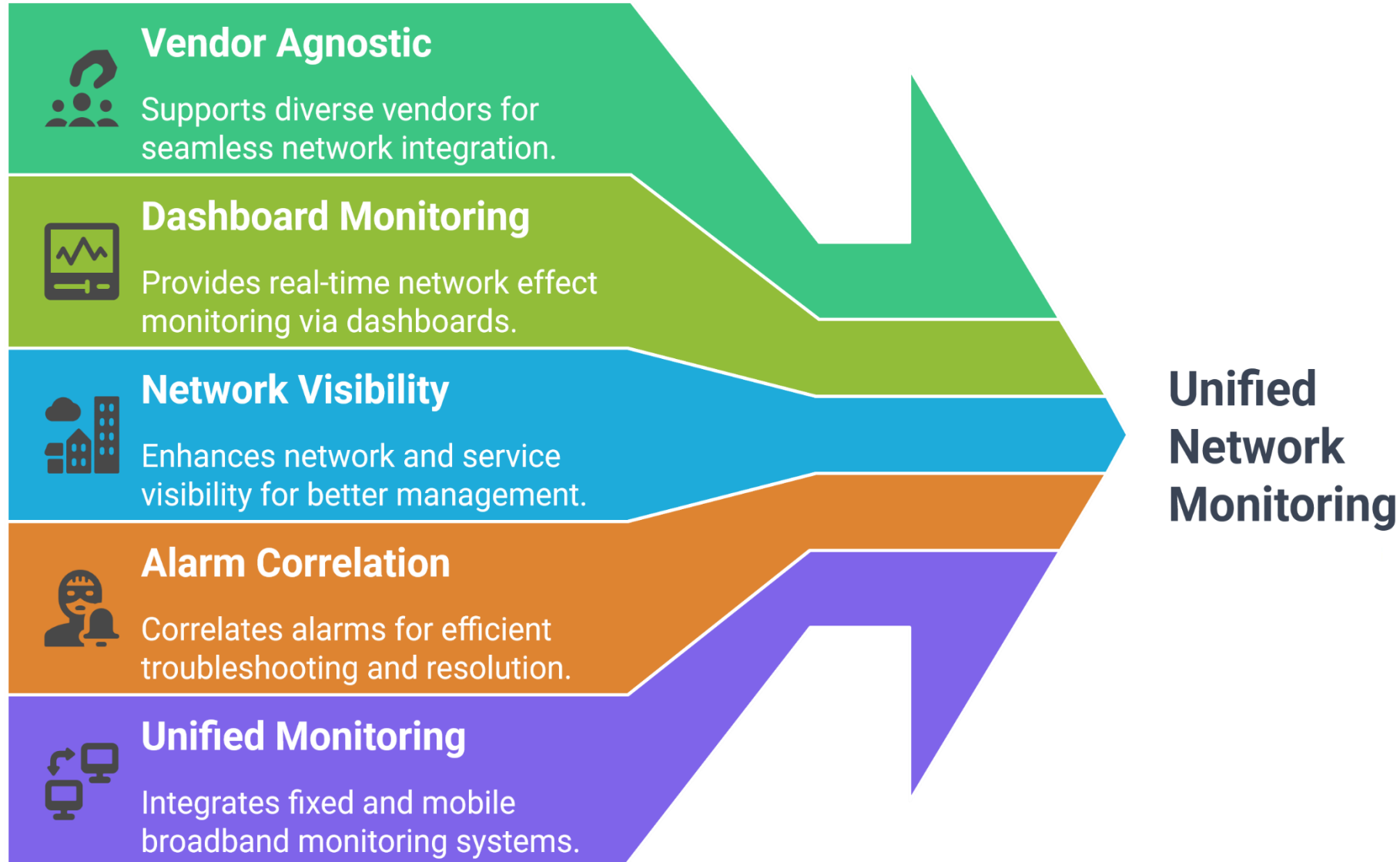
4

Automation and Cognitive Monitoring

Implementing AI/ML for efficiency

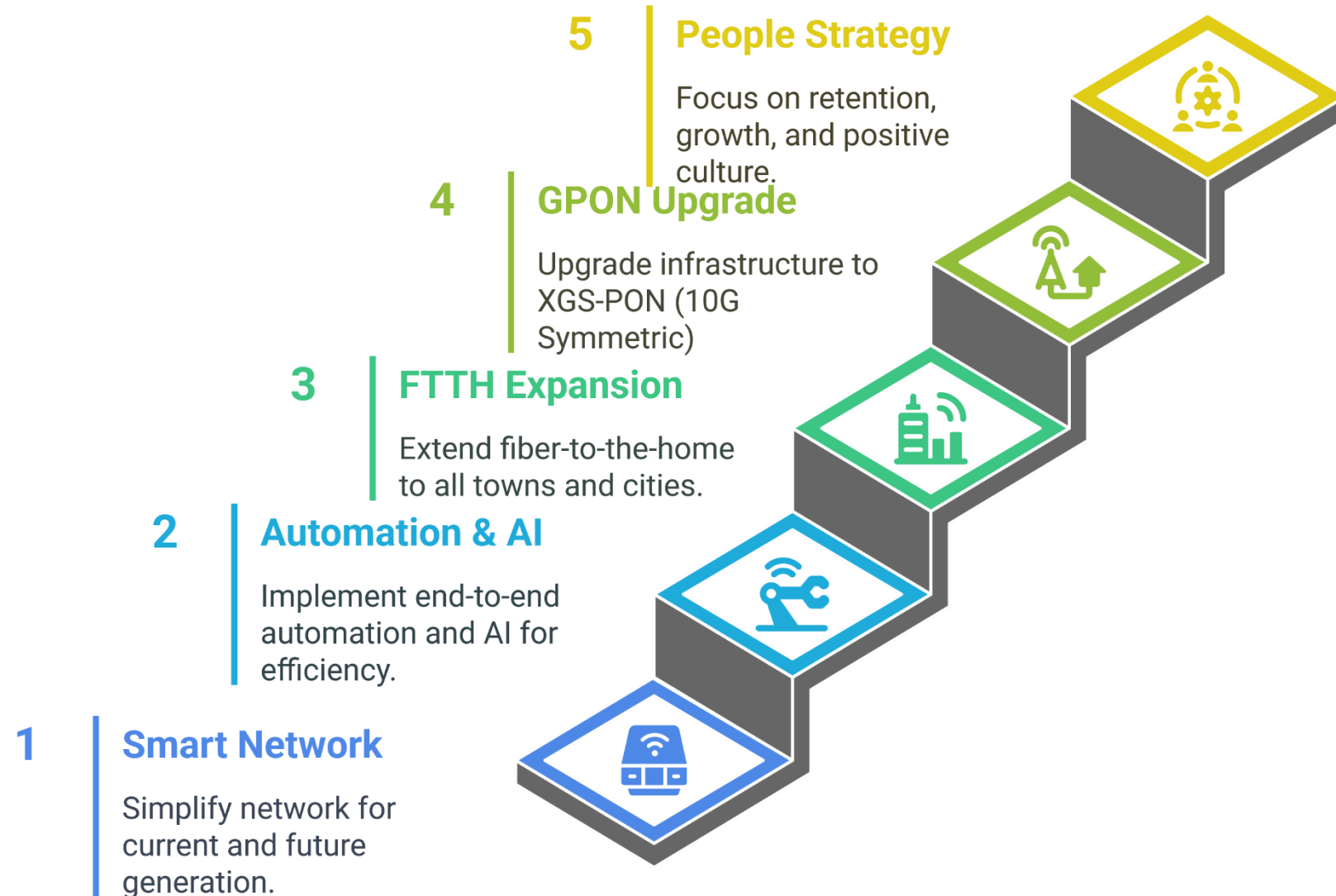


The Target: Next Generation NOC



The Roadmap

Enhancing The Network Highway for Fiji



Thank You.

